

The

In Church and Community



From the Pastors

## Embrace the Question...

by Pr. Justin Kosec and Pr. Sami Johnson



A good question can reveal the truth.

A good question can prompt something new about a person we've known for years.

A good question can teach us about ourselves.

If you could ask God any question, what would it be? Perhaps more importantly, if *God* could ask *you* a question, what do you think God would ask?



This Lent at Our Savior's, we will *Embrace the Question...*, exploring just what kind of questions people asked Jesus. In longer scripture readings that will center our worship experience on Sunday mornings, and through more in-depth exploration through prayer and study in our Wednesday evening worship services, we will see

that conversation with Jesus was always engaging, interesting, and full of twists and turns.

In the Bible, we will discover moments when people came to Jesus with deep questions about God, only to find Jesus had turned the conversation back at them with his own curious questions. We will confront the terrible ways certain religious people can use questions to harm and interrogate others. We will even hear that Jesus has some of the same questions about the world that we do—even though Jesus was also God.

Often, questions can serve to divide us—to show how far apart we feel from one another, and to separate the people who feel ignorant from those who seem in the know. This Lent, though, we will discover that when God is part of the conversation, questions almost always draw us closer to each other and closer to God.

We're excited for you to join us on this Lenten journey, where every person—and every question—has a place in the conversation with God.



Embrace  
the Question...  
Lent at Our Savior's



## Theology Tapped

Don't miss Theology Tapped, an engaging conversation on matters of faith and life in a fun, informal setting, with Pr. Randy. This month's installment will be on Thursday, March 26, from 8:00 to 9:30 P.M., at Monk's House of Ale Repute, 420 E. 8<sup>th</sup> St.

## Have Something to Eat!



*Photo by Katherine Chase on Unsplash.com*

**OSL Food Ministry** serves breakfast on Sundays in The Gathering Place, starting at 9:30, and Wednesday supper starting at 5:00. All are welcome!

OSL Food Ministry is entirely supported by freewill donations. Thank you for your \$6 contribution to cover expenses.

### Sunday Breakfasts

- 1 – Scrambled eggs, bacon, roasted potatoes, orange juice, yogurt, donut holes, and coffee
- 8 – Eggbake, orange juice, yogurt, donut holes, and coffee
- 15 – Scrambled eggs, bacon, roasted potatoes, orange juice, yogurt, donut holes, and coffee
- 22 – Breakfast pizza, orange juice, yogurt, donut holes, and coffee
- 29 – Authentic Mexican breakfast, prepared and served by friends from Pueblo de Dios

### Wednesday Suppers

Soup and pie for the whole month

## Memorials and Honoraria November–December 2019

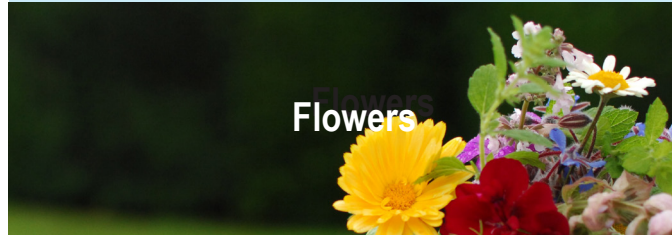
In Memory of Phil Miedema  
LeRoy and Janet Halstenson



## Baptisms

### January 5

Bodie Miles Missal, whose parents are David and Sarah Missal. Sponsors are the Tara and Scott Petersen family.



## Flowers

### January 12

Flowers in the Sanctuary and a telecast gift were given in loving memory of Warren Jensen, whose birthday was January 10, by his family.

### January 19

Flowers in the Celebrate Center are given by Jim and Catherine Nelson in memory of their great-grandson, Witten Klingenberg, who would have been one year old on January 19.

Flowers in the Sanctuary and Celebrate Center are given in memory of Evelyn Wierenga, whose funeral will be Sunday, January 19, by her family.



## Telecasts

### January 19

Telecasts are sponsored in loving memory of Lou Madsen, from Helen Madsen and family.

### January 26

Telecasts are sponsored by Bryan Peters, Lori Melin, and Safe-N-Secure Security Equipment, in memory of Marilyn Peters.

## Ins and Outs: Keyless Door Access



You've probably noticed the little boxes that have appeared on various entryways at OSL—they're part of a keyless door-access system that's been installed over the past several months (it's a bit of a project!) and now is up and running. The main advantage, from an administrative perspective, is to help monitor all the ins and outs at OSL, what with all the events and activities that take place here all the time, and to relieve the anxiety that occurs whenever a key (of which there are many)

goes missing: if a door-access fob is lost, it can simply be deactivated by computer.

What does this mean for you? Well...nothing, probably: it mostly has to do with unlocking the building in the morning and closing it up again at night, and thus is primarily an issue for OSL staff. But now when someone asks you what those little boxes on certain door frames are for, you can tell them!



## An Egg-cellent Note of Thanks

On behalf of the Faith Temple Food Giveaway, I would like to thank all of you for bringing empty egg cartons to the church for me to pick up and take out to this event. We get around 6,000 dozen small eggs a week, so we need a lot of cartons. They even use the egg dividers that the eggs come in and rubber-band hand-cut cardboard tops to hold the eggs in place.

We will take as many egg cartons as we can get because of the need. We are averaging around 500 people a week, and this includes volunteers that go through the line. It is such a



worthwhile program, sponsored by a small congregation, and relies on contributions from people. Hopefully a fundraiser will happen in the future to further this great program and service to those who need it.

Once again, thank you to the Our Savior's congregation for your support by bringing in egg cartons. They can be left in the Church Office anytime during regular business hours, or in one of the empty bins by the Library.

God's blessing on all of you.  
Ed Elkins

*Photo by Ryan ODee on Unsplash*

## On the Search

OSL's Governing Board will be appointing a Call Committee to conduct a search for OSL's next Pastor of Youth and Family. The committee will be comprised of seven members plus the Senior Pastor, and will be appointed by the board at an upcoming meeting. To nominate someone or to submit your name for consideration, contact the Church Office, 336-2942.



Join Pr. Tim for a Friendship Club presentation on the history and meaning of the season of Lent. Why do we begin with ashes on our forehead? Why is Lent 40 days long (actually, it's more than that: did someone miscount?)? Why do we have extra services on Wednesdays? What is the connection to Christmas and Easter? Come for a discussion of this holy season and how it can be a meaningful journey for you, on March 17, at 10:30 A.M., in the Friendship Room, with lunch and fellowship following, at 11:30, in The Gathering Place. And be sure to bring a friend!

## Don't Get Lost – Get Involved

### By Chad Mickelson

When my wife, Kimmy, and I joined Our Savior's approximately 20 years ago, it was done with the full hope that we had discovered a church body comfortable enough for us to feel "at home" but large enough to "get lost" in. A strange paradox. Basically, we kind of wanted to swing in on

Sunday, get inspired for the week and sneak out with minimal expectation for involvement.

God had other plans. The opportunities for involvement at OSL are many, and

I've enjoyed the chance to plug into some obvious passions, such as the Library. I never would have dreamed I'd try my hand at acting as part of the OSL Drama crew, or running a camera for the TV Ministry team. Serving as a Confirmation Mentor was a great way to enjoy a spiritual journey with my kids.

The most challenging way I've felt called to serve is through the Stephen Ministry program. Eight OSL members are currently in their final month of the 2020 Stephen Ministry Class. Lift them up in prayer this month—in thankfulness for their willingness to be open to a challenging call and in support for the great work in caring partnerships that awaits them. Serving as a Stephen Minister was also one of my most rewarding experiences over the last 20 years. I use "was," because Stephen Ministry offers the chance to become inactive and take a break to focus on other callings and commitments as they come along. With an occasional "nudge, but never a push," from Pr. Tim and others, I'm now slowly working to get back into the mix and become active again in this great program; to see what challenges and rewards might be discovered in the *next* 20 years.

I pray that you embrace the abundance of opportunities to be involved that Our Savior's provides. Never allow yourself to "get lost." Enjoy serving in the roles you are best fitted for. Push yourself to try a role you might never have considered. Revisit some opportunities that might be coming back around for another calling.

For more information regarding the Stephen Ministry program, contact Pr. Tim Lemme (336-2942, ext. 19, or tlemme@oslchurch.com) or Deb Harlan (336-2942 ext. 48, or dharlan@oslchurch.com).



## stephen MINISTRY

## Health Ministries

Our Savior's has a number of ongoing health ministries that meet on a weekly or monthly basis. Feel free to join any of the following sessions. For more information, contact Michelle Anderson, Faith Community Nurse, 336-2942, ext. 48, or mianderson@oslchurch.com.

### Footcare Clinic

Cost is \$25 per person. Wednesday, March 4, 9:00 A.M. to 3:00 P.M. Call the Church Office, 336-2942, to schedule your appointment.

### Hope for Living with Illness or Cancer

Every Tuesday at 2:00 P.M. in Caring Ministries. People and their families who have or are experiencing the challenge of cancer are welcome. If you cannot attend, but would like to be on our prayer and devotional mailing list, contact Michelle Anderson, 336-2942, ext. 48, or mianderson@oslchurch.com.

### Knitting/Crocheting Ministry

Learn how to knit or crochet prayer shawls (to be given to people to remind them of God's presence and love in their lives) and mittens and scarves (for missions).

Wednesdays, March 11 and 25, 9:30 A.M., Sunshine Room.

### Good Grief

Every Thursday at 10:00 A.M. in Room 103. This group is for anyone dealing with loss and crisis in life.

### Memory Care Support Group

Saturdays, 10:00 to 11:00 A.M., in the Conference Room. For caregivers of those Office with Alzheimer's and dementia, a place to share and to receive understanding and empathy. Contact Caring Ministries, 336-2942, for information.

**Recent Loss Series** The next Recent Loss Series will be held on Wednesdays in March, at 5:30 P.M., in the Chapel, ending in time to attend Lenten worship at 6:40. Participants are welcome to partake in the OSL community meal before class, beginning at 5:00 in The Gathering Place: look for the group's sign. To register, contact Michelle Anderson, mianderson@oslchurch.com or 336-2942, ext. 48.

## Better Choices, Better Health

OSL will be hosting some Better Choices Better Health workshops in the weeks ahead. First up: Diabetes Self-Management Program, on Fridays from March 6 through April 17, from 10:00 A.M. to noon in Room 101. Register at [goodandhealthysd.org/bcbhregister](http://goodandhealthysd.org/bcbhregister) or call 1-888-484-3800.

Later this spring, OSL will host Chronic Disease Self-Management Program, on Fridays from April 24 through May 29, from 9:00 to 11:30 A.M., in Room 101. Register at

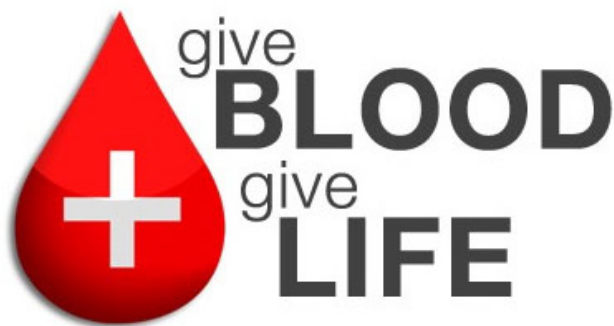
[goodandhealthysd.org/bcbhregister](http://goodandhealthysd.org/bcbhregister) or call 1-888-484-3800.

10:00 A.M. to noon; and again on Fridays, from September 11 through October 30, from



And OSL will be the site of two workshops in Sanford Health's series A Matter of Balance: Managing Concerns about Falls: the first will be on Fridays from June 12 through July 31, from

10:00 A.M. to noon. Register for either A Matter of Balance workshops at [sanfordhealth.org](http://sanfordhealth.org) (keywords: A Matter of Balance) or call 328-1860.



## Bloodmobile at OSL

As spring arrives, so does the Community Blood Bank Bloodmobile! The Bloodmobile will be at Our Savior's on Sunday, April 5—Palm Sunday—from 8:30 A.M. to 12:30 P.M. Stay tuned for more details to come soon.



*Photo by Luis Llerena on StockSnap.io*

## And Speaking of Blood...

Blood Pressure Monitoring is available in Caring Ministries: Stop by and relax for a few minutes before using the Omron self-monitor on the table near the window that overlooks the Gym. Cards are available to record your readings, plus information and recipes that can help you meet your health goals. There also is one monitor available for temporary check-out from the Caring Ministries/Sanford Health Resource Library. If OSL's Faith Community Nurse, Michelle Anderson, RN, is available, she can manually check your blood pressure and support your heart health self-management efforts.

## Recent Loss Series

The next Recent Loss Series will be held on Wednesdays in March, at 5:30 P.M., in the Chapel, ending in time to attend Lenten worship at 6:40. Participants are welcome to partake in the OSL community meal before class, beginning at 5:00 in The Gathering Place: look for the group's sign. To register, contact Michelle Anderson, [mianderson@oslchurch.com](mailto:mianderson@oslchurch.com) or 336-2942, ext. 48.

*Photo by Sharon McCutcheon on Unsplash*



## Chorus-pondence from Gene LeVasseur

Jack LaLanne, the popular fitness and nutrition guru and motivational speaker, opened the first modern health spa in 1936, and launched the first live exercise television show in 1956. Jack celebrated his 70<sup>th</sup> birthday by towing 70 boats with 70 people for a mile across Long Beach Harbor, holding the rope in his teeth while handcuffed and wearing leg shackles. It's safe to say Jack was one of the greatest fitness enthusiasts ever!

The word *enthusiasm* comes from the two Greek words: *en*, meaning *in* or *within*, and *theos*, meaning *God*. Enthusiasm is therefore “God within.”

I have the privilege of working with an amazing staff and congregation at Our Savior's, and one thing that is consistent with those that participate in ministries here is their enthusiasm. I believe that God is within all of us, and folks are somehow finding strength regardless of their human limitations. I recently came across a book I read many years ago, *Life Wide Open* by Pr. David Jeremiah. He outlined five suggestions on how to keep the fire burning inside of us:

1. Stretch beyond your comfort zone. There have been so many times I've observed fright in the eyes of musicians I gave a challenging selection to. Each time I've watched them step up and give their all, growing through the process and feeling great joy when the task was accomplished.
2. Spend time with kids. I am the oldest of five siblings, a teacher for 24 years, a parent and grandparent, and I continue to have the honor of working with children at OSL and as a clinician in schools. What a blessing it is each and every second I spend with kids! Toni and I are empty nesters, and if I sense she needs a boost in joy we find a way

for her to have grandma time—and it works every time! Her joy is returned and overflowing!

3. Seek out exciting experiences. It's one thing to dream about what we would like to do, and it's another to seek out a way to actually do them. I hesitate to confess this but I am a huge fan of the TV series “Survivor.” (I'm sure I just heard a groan from Pr. Randy's office) I've auditioned more than once and will keep auditioning. While I'm waiting to be cast, I intend to seek outdoor adventures that will become my own personal “Survivor” seasons.
4. Surround yourself with passionate people. Passion is contagious, and at Our Savior's we are blessed to have passionate people in every area. I spent last Saturday morning in the woodshop with six men who love to work with wood but, more important, love God and love people. They worked hard, talked about how to help others in need, had fun, and were filled by the fellowship. It was a great morning, and I see this happening in all ministries at OSL!
5. See the big picture. I was blessed to be raised in a family that stressed the eternal. The more I learn about God the bigger my view of the world becomes and the smaller my personal problems become.

Mark Hall and Matthew West composed a song, “Thrive,” that sums all this up beautifully. Here's the refrain: *Just to know You and to make You known, we lift Your name on high. Shine like the sun, make darkness run and hide. We know we were made for so much more than ordinary lives. It's time for us to more than just survive. We were made to thrive!*

And so we were!

### OUR SAVIOR'S STAFF DIRECTORY

Church Office: (605) 336-2942 • [oslchurch.com](mailto:oslchurch.com)

**Renee Aaker, ext. 10**  
Office Manager  
[raaker@oslchurch.com](mailto:raaker@oslchurch.com)

**Maribeth Anderson**  
Visitation Minister (PT)  
336-2942 (Church Office)

**Michelle Anderson, ext. 28**  
Faith Community Nurse  
[miaanderson@oslchurch.com](mailto:miaanderson@oslchurch.com)

**Denny Gale, ext. 39**  
Celebrate Band Coordinator  
[dgale@oslchurch.com](mailto:dgale@oslchurch.com)

**Randy Gehring, ext. 11**  
Senior Pastor  
[rgehring@oslchurch.com](mailto:rgehring@oslchurch.com)

**Deb Harlan, ext. 48**  
Caring Ministries Coordinator  
[dharlan@oslchurch.com](mailto:dharlan@oslchurch.com)

**Nancy Heesch, ext. 42**  
Nursery Director  
[robertheesch@yahoo.com](mailto:robertheesch@yahoo.com)

**Barb Haugan, ext. 23**  
Business Administrator  
[bhaugan@oslchurch.com](mailto:bhaugan@oslchurch.com)

**Sami Johnson, ext. 12**  
Pastor of Youth and Family  
[sjohnson@oslchurch.com](mailto:sjohnson@oslchurch.com)

**Duresa Kabato**  
Custodian  
336-2942 (Church Office)

**Justin Kosec, ext. 44**  
Pastor of Outreach and Communication  
[jkosec@oslchurch.com](mailto:jkosec@oslchurch.com)

**Don Lehmann**  
Pastor of Visitation (PT)  
336-2942 (Church Office)

**Tim Lemme, ext. 19**  
Pastor of Caring Ministries  
[tlemme@oslchurch.com](mailto:tlemme@oslchurch.com)

**Gene LeVasseur, ext. 40**  
Director of Worship  
[glevasseur@oslchurch.com](mailto:glevasseur@oslchurch.com)

**Deb Merxbauer, ext. 25**  
Library Coordinator  
[dmerxbauer@oslchurch.com](mailto:dmerxbauer@oslchurch.com)

**Nicole Mindt, ext. 33**  
Youth Coordinator  
[nmindt@oslchurch.com](mailto:nmindt@oslchurch.com)

**Loretta Nelson, ext. 14**  
Congregational Life Coordinator  
[lnelson@oslchurch.com](mailto:lnelson@oslchurch.com)

**Melissa Nesdahl, ext. 17**  
Director of Faith Formation  
[mnesdahl@oslchurch.com](mailto:mnesdahl@oslchurch.com)

**Lloyd Olson**  
Facilities Manager  
336-2942 (Church Office)

**Bill Reynolds, ext. 15**  
Director of Communications  
[breynolds@oslchurch.com](mailto:breynolds@oslchurch.com)

**John Schomberg, ext. 35**  
Director of Youth Ministry  
[jschomberg@oslchurch.com](mailto:jschomberg@oslchurch.com)

**Debbie Theis, ext. 43**  
Food Coordinator  
[dtheis@oslchurch.com](mailto:dtheis@oslchurch.com)

**Matthew Tylutki, ext. 31**  
Organist and Associate Director of Music and Fine Arts  
[mtylutki@oslchurch.com](mailto:mtylutki@oslchurch.com)

**Deanna Wehrspann, ext. 37**  
Music and Worship Professional  
[dwehrspann@oslchurch.com](mailto:dwehrspann@oslchurch.com)

**Lavada Woods, ext. 49**  
Financial Assistant  
[lwoods@oslchurch.com](mailto:lwoods@oslchurch.com)



*Photo by Vidal Balielo Jr. from Pexels*

## Women's Spring Table Gala

Decorate a theme table and invite your friends to the Women's Spring Table Gala on Saturday, April 18, from 10:00 A.M. to 1:00 P.M. A variety of table sizes will be available to decorate.

Trish Syverson will be the guest speaker, with a program titled "Hats Off to Women."

The deadline to reserve a table is March 22. Contact Cindy Nassen, 212-5792, or Janiece Peterson, 351-8155.

## Fit to Knit?

If you enjoy knitting or crocheting, OSL's Prayer Shawl Ministry is always looking for help keeping the closet full of beautiful shawls to be given as a blessing.

You may help by crocheting or knitting a prayer shawl of any color or design (some patterns are available for download at



[oslchurch.com/ministry/adults](http://oslchurch.com/ministry/adults)); donating yarn (there's a labeled bin by the Library); and praying for the people making and receiving shawls.

Questions? Contact Deb, [धारलन@oslchurch.com](mailto:धारलन@oslchurch.com) or 336-2942, ext. 48.

## Tune in to OSL!

You'll find recent videos of worship services, weekly information updates, and special events at [oslchurch.com/media](http://oslchurch.com/media), but in addition you'll want to subscribe to OSL's YouTube channel, where videos are archived for easy access. Visit [youtube.com/oslchurchsf](http://youtube.com/oslchurchsf).



*Photo by Joshua Ness on Unsplash.com*

## What Now? by Nancy Krueger

*What Now?* That has been the theme at OSL during Epiphany, and as I have been seeing it on the bulletin cover each week, I have that same question for WELCA.



Women of the ELCA has a purpose statement: As a community of women created in the image of God, called to discipleship in Jesus Christ, and empowered by the Holy Spirit, we commit ourselves to

- grow in faith
- affirm our gifts
- support one another in our callings
- engage in ministry and action
- promote healing and wholeness in the church, the society, and the world.

There are so many parts of this purpose statement that we do well at Our Savior's. There are many traditions that have been established that are a core part of OSL WELCA. With that being said, what can we do now to increase our awareness and grow our membership to do even more? You will see below some changes that we will be making to events that we have had in the past in order to do just that. We will also be adding some things to see how we can let others know about this great organization and what it has to offer. Please pray for us as we endeavor to honor the traditions while work to make new ones.

**March Bible Study:** "We are Called?" by Kathryn A. Kleinhans

Theme Verses: Mark 12:28–34, Luke 10:25–37, Romans 13:8–9, Galatians 5:14, Genesis 41–45, Esther 2–4 (source: gathermagazine.org).

**Prayer:** Gracious God, open our minds and our hearts to your word that we may learn together and grow in faith. Open our mouths to your word that we may share the good news of Jesus Christ with everyone that we meet. Open our arms to your word that we may show our faith through our actions. Amen.

### OSL WELCA 2020 Schedule of Events:

- Spring Luncheon: "Spring Table Gala" – Saturday, April 18
- Crossroads Conference – April 25 Brandon Lutheran
- WELCA State Convention – June 25–27, First Lutheran, Sioux Falls
- Group Activity – Wednesday Night, July, TBD
- WELCA Triennial Conference – July 16–19, Phoenix, Arizona
- Fall Gathering – Saturday, September 10

- Lefse Making – November, TBD
- Pie and Lefse Sale Fundraiser – TBD
- Christmas Luncheon – Saturday, December 12

**Spring Luncheon**, Saturday, April 18, 10:00 A.M. to 1:00 P.M. Notice the date change for the Spring Luncheon. We are trying something different this year and will be having a Spring Table Gala. We will be asking people to decorate a table however you would like. You will receive a discounted ticket to the luncheon, and, if you like, you may sell the tickets for your table to your friends and family. (If you prefer, we will sell the tickets for you.) No one will be able to see all of the tables until the morning of the event. You would need to be available on the Friday to come and decorate your table. Trish Syverson will be our guest speaker, with a program titled "Hats Off to Women." We know we have some very creative people who will come up with some great ideas to make this event a success. More information will be forthcoming as to how you can be a part of this.

**2020 Unit Wide Mission Projects:** We are dedicating some of our fundraising and mission giving this year to Susan B. Anthony Elementary School. They have asked that we come on April 15 and 20 to help provide a breakfast for their students in grades three, four, and five before they start their statewide testing. We are working in conjunction with the Mission in Action team at Our Savior's to help them with these two events. Please be watching the bulletin to see how you can be involved.

**"Sweets for Your Valentine" Sale:** This event was a great success. Thank you to everyone who helped set up, sell, and clean up, and those who contributed goodies for this event. As always, we cannot do this without you!

**WELCA Board Members:** Nancy Krueger, President; *open*, Vice President; Karen Zimbeck, Secretary; Lori Tendler, Treasurer; Sherry Roth, Mission Action; Jodie Nielsen, Advisor

## Men's Bible Breakfast

OSL's Men's Bible Breakfast group meets on the first and third Saturday of each month, at 8:30 A.M., in the Conference Room. A continental breakfast is provided by members at each gathering.

Men of all ages are invited to attend this one-hour Bible study when it next meets, on March 7 and March 21.

For more details, contact Pr. Tim Lemme, [tlemme@oslchurch.com](mailto:tlemme@oslchurch.com) or 336-2942, ext. 19.

## Take Out Church: Fidget Spinners and Discussion Questions for the Lenten Journey

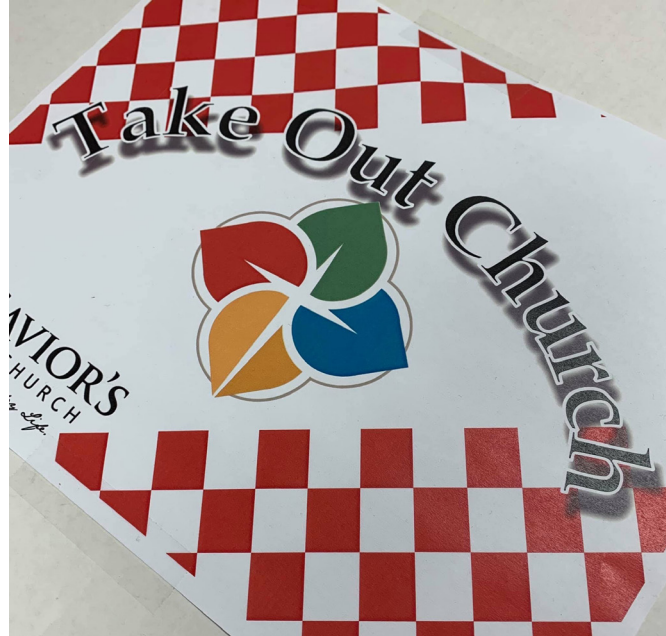
As we actively seek to connect faith to everyday life, OSL Children's Ministry has been providing the opportunity for families—and interested individuals—to enjoy hot and ready Take Out Church.

Contained in a pizza box, Take Out Church fills those who hunger for spiritual formation with Faith5, scripture, and everything needed for an activity, promoting discussion and fun around current events in the church year. To date, these boxes have enhanced Advent, Lent, VBS, Kick-Off Weekend, the preaching series *Worthy*, and more.

This ministry began with an awareness that family life is busy *and* that we have incredibly engaged members. For those who would be away for a Sunday to be at a sports tournament or the family lake cabin, Take Out Church would provide opportunity to experience faith activity while gone. And, for everyone, it keeps church communication alive at home, providing the opportunity to go deeper and explore church



themes in a way everyone can appreciate. Nearly 40 of these boxes fly out the door with each theme—more than double since its start.



With our Lenten journey focused on *Embracing the Question*, our newest Take Out Church box contains an altar cloth, candle, and balloon to pass for blessings and bruises. There's also a scripture reading, prayer, and blessing. Then, to bring helpful family discussion to life, there is a conversation pie chart and fidget spinner. You get to place the fidget spinner on the pie center and spin it. Whatever question you land on is what you get to answer. The questions will have new answers every day, based on how the day goes, providing for days of spinning delight and meaningful conversation. The discussion questions and fidget spinners are for families to forever keep and enjoy.

Make sure to pick up your new Take Out Church box on the table by the Education Desk when you are next in!

—Melissa Nesdahl

## A Moment of Reflection... ...Can Lead to Action

If you have ever had the good fortune of backpacking in the Big Horn Mountains of Wyoming, you would have been treated to several spectacular views along the way. One memorable trip of mine included a stop at Mirror Lake. Gazing into the clear blue water, I saw an almost perfect view of the sky above; in looking down, I was looking up. It was beautiful, but the moment didn't last long, for the trail beckoned and the destination for the evening was still a few thousand steps away.

Without too much of a stretch, think of that experience and the similarities to the recent annual meeting of the Our Savior's Lutheran Church

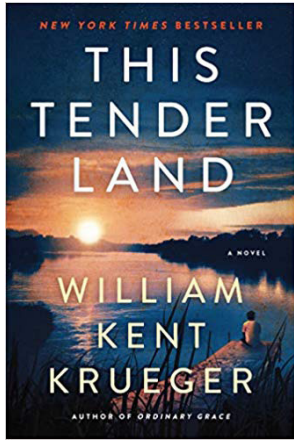
Foundation. First of all, there were not that many on the hike, nor at the meeting. Everyone wanted to get to the campsite and set up for the evening, while those at the Foundation meeting simply wanted to get out of The Gathering Place. The Bighorns offered Mirror Lake and beyond. The annual report was a summary of 2019 but also a reflection of growth and service since 1978. Beautiful. In 2019 alone, the Foundation gave \$112,300 to support the ongoing needs of Our Savior's.

The story of the Bighorns is now just a memory of mine, perhaps never to be repeated. The Foundation, on the other hand, is just begin-

ning to grow. The major element in the growth of the Foundation's assets is as a result of gifts from individuals' estates. However, only about three percent of the OSL population has made provisions in their planning for legacy giving. That means that 97% still have the chance to do so. Wow! Talk about potential!

Take a moment to look over the Foundation's annual report. Look down into the report and then look up and reflect on the excellent results. Think about how you can take part in the beauty. I'll join you for the journey! Reach me, Jon Oien, at [joien@sio.midco.net](mailto:joien@sio.midco.net).

## Winter One Church One Read Discussion



The library committee will lead a discussion of the Winter One Church One Read selection, *This Tender Land* by William Kent Krueger, on March 22, at 10:00 A.M., in the Office Conference Room.

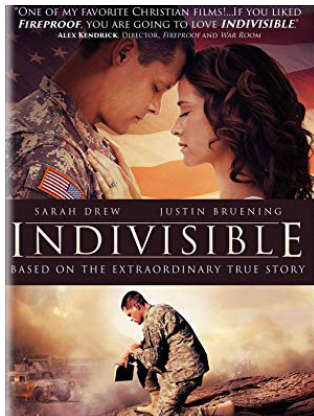
*This Tender Land* is a magnificent novel about four orphans on a life-changing odyssey during the Great Depression. In 1932, the Lincoln School in Minnesota is a pitiless place where hundreds of Native American children, forcibly separated from their parents, are sent to be educated.

It is also home to an orphan named Odie O'Banion, a lively boy whose exploits earn him the superintendent's wrath. Forced to flee, he and his brother Albert, their best friend Mose, and a brokenhearted little girl named Emmy steal away in a canoe, heading for the mighty Mississippi and a place to call their own.

Over the course of one unforgettable summer, these four orphans will journey into the unknown and cross paths with others who are adrift, from struggling farmers and traveling faith healers to displaced families and lost souls of all kinds. With the feel of a modern classic, *This Tender Land* is an enthralling, big-hearted epic that shows how the magnificent American landscape connects us all, haunts our dreams, and makes us whole.

Copies of the books are available for checkout in the Library.

## Second Saturday Movie



This month's Second Saturday Movie, on March 14, will be *Indivisible*, the extraordinary true story of Army Chaplain Darren Turner and his wife, Heather, whose lives are fully devoted to serving God, family, and country. When war etches deep battle scars both overseas and on the home front, the Turners' rock-solid marriage is shaken to its core.

Carrying burdens the other can't comprehend, each must decide if they're willing to face one more battle—the fight to save

their marriage. From the director of *The Grace Card*, *Indivisible* is the story of one marriage...one family...under God.

Make a day of it with the movie at 2:30 in the Holy Word Theatre, followed by worship at 5:00 in the Sanctuary, and dinner afterward in The Gathering Place!

## Eggs-on-the-Shelf Lent and Easter Activity

To keep God's grace at the heart of the Lenten season, the OSL Library will sponsor a Resurrection Egg Hunt on Sundays and Wednesdays, through April 12. Find one of the Resurrection Eggs hidden in the front of the Library, check out an item, answer a question about the Easter story, and receive a prize and a treat!

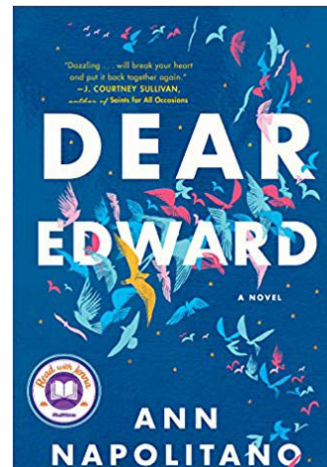
## Monthly Book Club for Adults

The Book Club for Adults meets at 7:00 P.M. on the fourth Thursday of each month in the OSL Library to discuss that month's book. The March 26 selection will be *This Tender Land* by William Kent Krueger. Find more information about under "Winter One Church One Read Discussion," on this page.

Join this exciting community of readers! A list of 2020 selections is available in the OSL Library.

## New for Adults

***Dear Edward* by Ann Napolitano.** One summer morning, 12-year-old



Edward Adler, his beloved older brother, his parents, and 183 other passengers board a flight in Newark headed for Los Angeles. Among the passengers are a Wall Street genius, a young woman coming to terms with an unexpected pregnancy, an injured veteran returning from Afghanistan, a business tycoon, and a free-spirited woman running away from her controlling husband.

Halfway across the country, the plane crashes. Edward is the sole survivor.

Edward's story captures the attention of the nation, but he struggles to find a place in a world without his family. He continues to feel that a part of himself has been left in the sky, forever tied to the plane and all of his fellow passengers.

Then he makes an unexpected discovery—one that will lead him to the answers of some of life's most profound questions: When you've lost everything, how do you find the strength to put one foot in front of the other? How do you learn to feel safe again? How do you find meaning in your life?

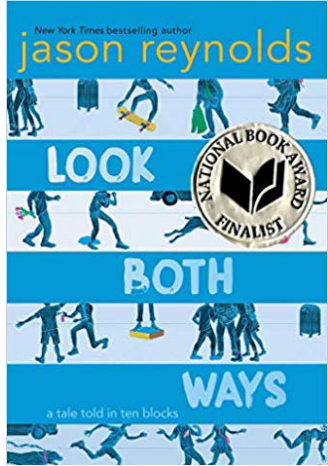
*Dear Edward* is at once a transcendent coming-of-age story, a multidimensional portrait of an unforgettable cast of characters, and a breathtaking illustration of all the ways a broken heart learns to love again.

### Additional New Titles for Adults

- *Bittersweet* by Shauna Niequist
- *The Seven Rules of Elvira Carr* by Frances Maynard
- *Such a Fun Age* by Kiley Reid

## New for Middle- and High-School Youth

**Look Both Ways** by Jason Reynolds. This story was going to begin like all the best stories—with a school bus falling from the sky, but no one saw it happen. They were all too busy.



They were too busy talking about boogers, stealing pocket change, skateboarding, wiping out, braving up, executing complicated handshakes, planning an escape, making jokes, lotioning up, finding comfort, but mostly, too busy walking home.

Jason Reynolds conjures ten tales (one per block) about what happens after the dismissal bell rings, and brilliantly weaves them into one wickedly funny, piercingly poignant look at the detours we face on the walk home, and in life.

### Additional New Titles for Middle- and High-School Youth

- *The Librarian of Auschwitz* by Antonio Iturbe
- *The Green Ember* by S. D. Smith
- *Kingdom Keepers: Dark Passage* by Ridley Pearson

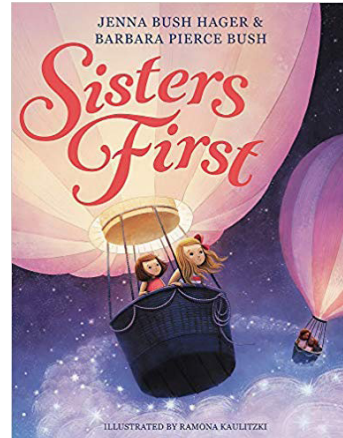
## Spring Book Sale Is Coming!

The OSL Library will be accepting books, movie DVDs, and music CDs (no textbooks, encyclopedias, or dictionaries) from Sunday, March 8, through Wednesday, April 8, for its Spring Book Sale. The sale will be on Saturday, April 25, from 10:00 A.M. to 6:30 P.M., and Sunday, April 26, from 8:30 A.M. to 12:30 P.M., in the Friendship Room.



## New Picture, Early Reader, and Chapter Books

**Sisters First** by Jenna Bush Hager and Barbara Pierce Bush. A



young girl's wish is granted when a new sister arrives. While the baby can't do much, over time the big and little siblings become inseparable, playing and dancing, imagining and laughing.

By each other's sides, they are smarter, kinder, and braver than they ever thought they could be. And they are forever sisters first. This exquisite celebration of the bond between sisters is inspired by the spirited

childhood of Jenna Bush Hager and Barbara Pierce Bush, authors of *Sisters First: Stories from Our Wild and Wonderful Life*.

### Additional New Picture Books

- *We Are Grateful: Otsalibeliga* by Traci Sorell
- *Some Days I Flip My Lid* by Kellie Doyle Bailey

### New Early Reader Books

- *Drop It, Rocket* by Tad Hills
- *Barbie: A Pet Vet* by Mary Man-Kong

### New Chapter Books

- *Billy and the Mini Monsters: Monsters on a Plane* by Zanna Davidson
- *My Weird School: Miss Daisy Is Crazy* by Dan Gutman

## Lent and Easter Displays in the OSL Library

Enrich your Lenten journey with seasonal books, movies and music from the Library. A large selection of items is on display for children, youth, and adults.

## OSL Library Hours

Sunday — 8:30 A.M.–12:15 P.M.

Monday — 9:00 A.M.–noon

Tuesday — 9:00 A.M.–noon

Wednesday — 9:00 A.M.–7:30 P.M.

Thursday — 9:00 A.M.–noon

Friday — Closed

2<sup>nd</sup> Saturday of the Month — 10:00 A.M.–noon,  
4:30–6:30 P.M.



909 West 33rd St.,  
Sioux Falls, SD 57105

(605) 336-2942  
[www.oslchurch.com](http://www.oslchurch.com)

INTERCOM (USPS311210)

Published monthly by:

Our Savior's Lutheran Congregation

909 West 33rd Street, Sioux Falls, SD 57105

Periodicals Postage Paid at Sioux Falls, South Dakota

POSTMASTER:

Please send address change to INTERCOM,  
909 West 33rd Street, Sioux Falls, SD 57105

# The *intercom* March 2020

## In Church and Community

The Monthly Newsletter of Our Savior's Lutheran Church

### *Worship Services*

Saturday Evening – 5:00 P.M., Sanctuary

Sunday Morning

Festive Worship – 8:45 and 11:00 A.M., Sanctuary

Celebrate Worship – 8:45 and 11:00 A.M., Celebrate Center

### *Lenten Services*

Wednesday Midweek Lenten Worship – noon, in the Chapel,  
and 6:40 P.M., in the Sanctuary

### *Television and Internet*

Celebrate: 9:00 A.M., KTTW (cable channel 9; channel 7.1)

Festive: 1:00 P.M., KSCB (cable channel 30; channel 53)

Website: [oslchurch.com](http://oslchurch.com)

Social Media: [twitter.com/oslchurchsf](https://twitter.com/oslchurchsf) · [facebook.com/oslchurchsf](https://facebook.com/oslchurchsf) ·  
[youtube.com/oslchurchsf](https://youtube.com/oslchurchsf)

Cover banner photo by Rachel Walker on Unsplash ♦ Offering plate photo via Backgrounddownload

## Your Offering Makes a Difference

Your generosity is making a real difference in people's lives through the mission and ministry of OSL. Thank you for your faithful and passionate commitment to God's work through this congregation. Your generosity helps Our Savior's fully fund its ministry of connecting faith to everyday life.

**Ministry Support  
Information for 2019 Is  
Available from the Church  
Office on Request**