

The

In Church and Community



## From the Pastor

# Belong: A Time to Remember That We Are Never Alone



What does it mean to “belong” to the Body of Christ? What does it mean to know that in a world filled with uncertainties and fears you are part of the Family of God? What does it mean for *all of us* to know that we are not alone?

Throughout the month of November, we will explore these questions and many more through a worship and preaching series, *Belong*. Each week's sermons will focus on issues of loneliness and belonging, and how we as God's people find the comfort and support we need during the difficult times of life. We will also explore how we are called to be that source of comfort and support to others.

*Belong* will begin on All Saints Weekend, November 2 and 3, a time in which we will remember in our worship services those who have died this past year. This is a powerful worship experience indeed, but for some it can also be a time of grief and sorrow, a time in which you may find yourself feeling alone.

But we are never alone! God's love is always near us, a promise of grace that will never

leave our side. As we remember those who were witnesses to the faith and who now rest in God's eternal kingdom, we look around our worship space and are reminded too of the presence of God we see in the faces of those we call our brothers and sisters in Christ. We *belong* to this Family of God, and throughout the month of November we will be reminded of that once again.

In addition to the preaching and worship series this month, there also will be several adult-education opportunities on Sunday mornings between services, from 10:00 to 10:50, in the Chapel:

- ♦ November 3: Caring Ministries will host an informative session on the many support services at Our Savior's, how you can benefit from them, and how you can participate in these ministries.
- ♦ November 10: Stephen Ministries Awareness Sunday. Come learn the history of the Stephen Ministry Program at OSL. See how

this program can assist you, or someone you know, or see if you would like to be part of the Stephen Ministries team.

# Belong

- ♦ November 17: The Holiday Season is a time of joy and celebration for many people, but for others, the holidays can be a time of sadness and loneliness. No matter how you may be feeling, whether you need support, or know somebody who does, come and learn about ways in which all of us can find the support we need to navigate through this time of year.

*continued*

*continued from p. 1*

In addition to these Sunday morning educational opportunities, Pr. Justin will be providing a resource guide for LifeGroups to use throughout this month, which will speak directly to the preaching series and what it means to *Belong*. If you are not part of a LifeGroup already, now is the time to join one! Contact Pr. Justin, [jkosec@oslchurch.com](mailto:jkosec@oslchurch.com) or 336-2942, ext. 44, for more information on how you may *belong* to a group.

I hope you will find the *Belong* series a meaningful time for you. May it be a reminder to all of us of how blessed we are to be part of this Family of God we call Our Savior's! *You* are a blessing to those around you, and you are loved! *You Belong* indeed!

—Pr. Tim Lemme

## November 24 Is Blessing Bag Sunday!

As Pr. Tim notes above, all month at OSL we'll hear how we *belong* to each other and to God. But we also know that many beyond our walls long for a sign that they belong—they wonder if anyone remembers them, or if anyone cares.

And so, OSL's Caring Ministries team will assemble a list of all our shut-in friends—people who love this church community but rarely, if ever, get to leave their homes. The team will carefully map out where each of these people live.

Then, on Sunday, November 24, you can stop by the Blessing Bag table in The Gathering Place to take a small blessing (including puzzles, hot cocoa, and more) to these friends. Just pick up one bag, select the part of town where you live, and drop off the bag with our shut-in friend on your way home.

Sometimes it's a little awkward. But rarely has it been so easy to show someone that they *belong* to us, and to God.

## Kids Eat Free in November

OSL's Food Ministry team always works to keep meal costs affordable, and meals are always freewill—people contribute whatever they can joyfully give.

You already know that kids love to eat the great food served at Our Savior's on Wednesdays and Sundays. This month, in celebration of OSL's core value of Community, we're going further to bring the family together around the breakfast



## Memorials and Honoraria September 2019

**In Memory of Richard M. (Dick) Anderson**  
Betty Pfeifle

**In Memory of Stella Curry**  
Eldon and Pauline Nelson

**In Memory of Jeff Hazard**  
Jim and Carol Oakland

**In Memory of John Hillgren**  
Kerry and Carol Nixon  
Carol Weisz

**In Memory of LeRoy Schriever**  
Don and Sarah Abbas  
Jack Dyvig  
Patricia Gildemeister  
Ray and Marty Johnson  
Bill and Lavada Woods

**In Honor of Bev Hallstrom's 85<sup>th</sup> Birthday**  
Donald and Cherie Ortman

or dinner table here at Our Savior's: This November, *kids confirmation age and under eat free at Our Savior's*—all month long!

Kids Eat Free is co-sponsored by OSL's Love in Action and Discipleship Core Ministry Teams.

## Have Something to Eat!

**OSL Food Ministry** serves breakfast on Sundays in The Gathering Place, starting at 9:30, and Wednesday supper starting at 5:00. All are welcome! Thank you for contributing to the freewill offering to help cover expenses. Here are the November menus (subject to change):

### Sunday Breakfasts

- 3 – Bacon, scrambled eggs, roasted diced potatoes, yogurt, orange juice, and donut holes (sponsored by the OSLC Foundation)
- 10 – Cheese omelets, sausage patties, yogurt, orange juice, and donut holes
- 17 – Bacon, scrambled eggs, roasted diced potatoes, yogurt, orange juice, and donut holes
- 24 – Biscuits and gravy, scrambled eggs, yogurt, orange juice, and donut holes

### Wednesday Suppers

- 6 – Pork loin, loaded potatoes, green beans, hot buns and butter, tossed salad, and dessert
- 13 – Scalloped potatoes and ham, peas, hot buns and butter, tossed salad, and dessert
- 20 – German meatballs, mashed potatoes, carrots, hot buns and butter, tossed salad, and dessert
- 27 – Soup and Pie Dinner (Thanksgiving eve)

### Friendship Club Lunch

- 19 – Traditional Thanksgiving meal



*Photo by Katherine Chase, on Unsplash.com*





*Photo by Artem Bali on Unsplash.com*

## New New Member Classes

You know OSL is a large congregation. So when you join OSL as a new member, how do you get involved? How do you get to know that nice family four rows in front of you? How do you ever find the Woodshop—and once you do, will you ever find your way back?

This month, prospective new members can discover the answers to these questions (and more!) through OSL's totally revamped three-part New Member Class, which will emphasize relationships and engagement:

- **Wednesday, November 6 (Session 1, 5:30 to 7:00 P.M.):** New members eat dinner together; then meet the pastors and other friendly faces they'll likely see around church.
- **Wednesday, November 13 (Session 2, 5:30 to 7:00 P.M.):** New members eat dinner together; then investigate Wednesday night OSL experiences that most interest them, from Bible studies to the Library and Woodshop.
- **Wednesday, November 20 (Session 3, 5:30 to 7:00 P.M.):** New members eat dinner together; then complete the course with a specially crafted miniature worship service.

Each session will build on the previous sessions, so attendees must participate in the full course. If you're already involved at OSL and want to meet new members, contact Pr. Justin, 336-2942, ext. 44 or [jkosec@oslchurch.com](mailto:jkosec@oslchurch.com).

## OSL Angel Tree: Same Tree, Different Time

This year's Angel Tree is appearing early! Beginning on November 3, you will be able to take cards from the tree to support children and families with the ministries OSL has built relationships with—Lutheran Social Service, Children's Home Society, VOA (Volunteers of America) Dakotas and VOA Youth Center (formerly known as the Bowden Youth Center), and The Community Outreach.

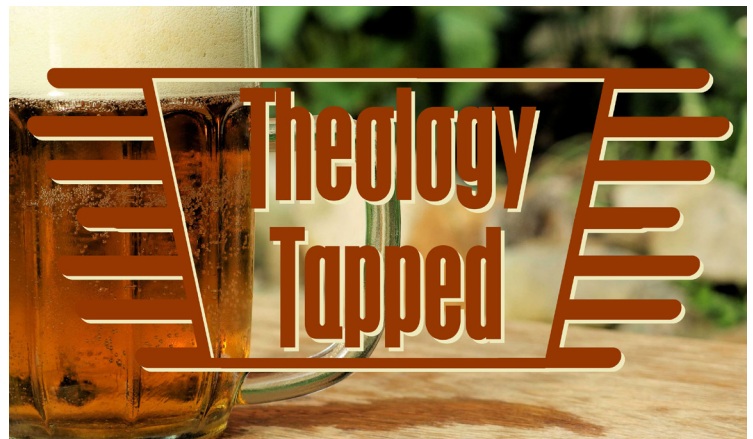
Why the early start for the Angel Tree? Because this year OSL is adding Sharing Christmas to the mix, in continued support of this congregation's commitment to help individuals become self-sufficient. A partnership with The Community Outreach, Sharing Christmas gives people the opportunity to shop for brand-new toys for their children, at ten percent of the item's retail value. This promotes pride and dignity while allowing families to use their money where it is most needed. And it fits in loving connection with OSL's relationship to people living in the Hezekiah House properties. These gifts will be shared on cards, like all other gifts.

Since The Community Outreach will be distributing Sharing Christmas gifts the first week of December, OSL's Angel Tree will be up November 3 through November 24, with gifts due back to OSL by November 25. Gifts will then be dispersed to the appropriate organizations in plenty of time for them to prepare for their Christmas celebrations.

Thank you for stopping at the tree in the south entrance, near the Library, and selecting a card or cards to bless those who may not otherwise receive a gift this Christmas. You are making a difference in the life of another!







## Theology Tapped

If you're looking for engaging conversation on matters of faith and life in a fun, informal setting—and who isn't?—join Pr. Randy for Theology Tapped!

And to make things even more interesting, the November meet-up will be on December 5, because of Thanksgiving the previous week. So head to Monk's House of Ale Repute, 420 E. 8<sup>th</sup> St., for the next Theology Tapped, on Thursday, December 5, from 8:00 to 9:30 P.M.

### OUR SAVIOR'S STAFF DIRECTORY

Church Office: (605) 336-2942 • [oslchurch.com](mailto:oslchurch.com)

**Renee Aaker, ext. 10**  
Office Manager  
[raaker@oslchurch.com](mailto:raaker@oslchurch.com)

**Maribeth Anderson**  
Visitation Minister (PT)  
336-2942 (Church Office)

**Michelle Anderson, ext. 28**  
Faith Community Nurse  
[mranderson@oslchurch.com](mailto:mranderson@oslchurch.com)

**Denny Gale, ext. 39**  
Celebrate Band Coordinator  
[dgale@oslchurch.com](mailto:dgale@oslchurch.com)

**Randy Gehring, ext. 11**  
Senior Pastor  
[rgehring@oslchurch.com](mailto:rgehring@oslchurch.com)

**Deb Harlan, ext. 48**  
Caring Ministries Coordinator  
[dharlan@oslchurch.com](mailto:dharlan@oslchurch.com)

**Nancy Heesch, ext. 42**  
Nursery Director  
[robertheesch@yahoo.com](mailto:robertheesch@yahoo.com)

**Barb Haugan, ext. 23**  
Business Administrator  
[bhaugan@oslchurch.com](mailto:bhaugan@oslchurch.com)

**Sami Johnson, ext. 12**  
Pastor of Youth and Family  
[sjohnson@oslchurch.com](mailto:sjohnson@oslchurch.com)

**Duresa Kabato**  
Custodian  
336-2942 (Church Office)

**Justin Kosec, ext. 44**  
Pastor of Outreach and Communication  
[jkosec@oslchurch.com](mailto:jkosec@oslchurch.com)

**Don Lehmann**  
Pastor of Visitation (PT)  
336-2942 (Church Office)

**Tim Lemme, ext. 19**  
Pastor of Caring Ministries  
[tlemme@oslchurch.com](mailto:tlemme@oslchurch.com)

**Gene LeVasseur, ext. 40**  
Director of Worship  
[glevasseur@oslchurch.com](mailto:glevasseur@oslchurch.com)

**Deb Merxbauer, ext. 25**  
Library Coordinator  
[dmerxbauer@oslchurch.com](mailto:dmerxbauer@oslchurch.com)

**Nicole Mindt, ext. 33**  
Youth Coordinator  
[nmindt@oslchurch.com](mailto:nmindt@oslchurch.com)

**Loretta Nelson, ext. 14**  
Congregational Life Coordinator  
[lnelson@oslchurch.com](mailto:lnelson@oslchurch.com)

**Melissa Nesdahl, ext. 17**  
Director of Faith Formation  
[mnesdahl@oslchurch.com](mailto:mnesdahl@oslchurch.com)

**Lloyd Olson**  
Facilities Manager  
336-2942 (Church Office)

**Bill Reynolds, ext. 15**  
Director of Communications  
[breynolds@oslchurch.com](mailto:breynolds@oslchurch.com)

**John Schomberg, ext. 35**  
Director of Youth Ministry  
[jschomberg@oslchurch.com](mailto:jschomberg@oslchurch.com)

**Debbie Theis, ext. 43**  
Food Coordinator  
[dtheis@oslchurch.com](mailto:dtheis@oslchurch.com)

**Matthew Tylutki, ext. 31**  
Organist and Associate Director of Music and Fine Arts  
[mtylutki@oslchurch.com](mailto:mtylutki@oslchurch.com)

**Deanna Wehrspann, ext. 37**  
Music and Worship Professional  
[dwehrspann@oslchurch.com](mailto:dwehrspann@oslchurch.com)

**Lavada Woods, ext. 49**  
Financial Assistant  
[lwoods@oslchurch.com](mailto:lwoods@oslchurch.com)



## That's a Wrap!

Our Savior's celebrated Prayer Shawl and Quilt Weekend on October 12 and 13, an opportunity to lift up the work of the dedicated volunteers who knit or crochet prayer shawls or create quilts.

The prayer shawls are symbolic of an inclusive, unconditionally loving God, and are given to those who need a warm embrace. Quilts are distributed to several local agencies as well as Lutheran World Relief. Quilted lap robes are given to local nursing homes, and many other items are created by these faithful volunteers—as were displayed in the Sanctuary and Celebrate Center during worship services that weekend (see photos below).

Thanks to them for their diligent efforts, and thanks be to God!



November's Friendship Club gathering will be extra special!

First, Prs. Randy and Shelly Gehring will give a presentation about their son's seminary internship experience in Malaysia. Tom Gehring, a student at Luther Seminary, spent nearly a year serving at Luther House Chapel in Kuala Lumpur, Malaysia, in 2018–2019. His parents were able to visit him there during his internship, and will share their observations and experiences, as well as those of their son.

Following the Gehrings's presentation, there will be a brief Thanksgiving devotional, followed in turn by a traditional Thanksgiving meal in The Gathering Place.

Friendship Club will meet on Tuesday, November 19, at 10:30 A.M., in the Friendship Room. Don't miss it—and don't forget to bring a friend to Friendship Club!

*Photos by Deb Harlan*



## Recent Loss Winter Series

OSL's Recent Loss group will meet on Wednesdays, November 6 through 20 and December 4, from 5:30 to 6:30 P.M., in the Chapel. Anyone who has recently lost a loved one is welcome! Register with Michelle Anderson, [mianderson@oslchurch.com](mailto:mianderson@oslchurch.com) or 336-2942, ext. 28. Attendees are welcome to partake in OSL Community Supper at 5:00 in The Gathering Place; look for the group's table.

## For Family Caregivers

Called to Care: A Conference for Family Caregivers will be held at OSL on Saturday, November 9, from 9:00 A.M. to 1:00 P.M.

Connect with local resources and build a community of support to help you care for those you love. Workshops will help you beat stress, prepare yourself and your home for caregiving, and plan for the future. Brunch will be provided.

Register for free at [aarp.cvent.com/CaregiverConference19](http://aarp.cvent.com/CaregiverConference19), or by calling (844) 227-9304.

## Connecting Faith with Everyday Life by Joan Bacon

"Our Savior's is a people forgiven in Christ whose mission is to proclaim Christ and nurture faith



**stephen  
MINISTRY**

that connects with everyday life." Sound familiar? Yes, it's our congregation's mission statement. Stephen Ministers carry out that mission by providing Christian care to individuals whose everyday lives have been derailed or disrupted by divorce, chronic

illness, death of a loved one, financial setback, family strife, or other situation. While situations vary, the result is often the same: Someone's "everyday life" flies out the proverbial window, and an alien version creeps in! Then the person either searches for an exit ramp back to their much-missed everyday life or tries to navigate confusing lanes to a new-normal one. Either way, it's a difficult journey often complicated by spiritual struggles—a journey best not undertaken alone.

As a Stephen Minister, I've had the privilege of accompanying three care partners on their journeys to new or re-established everyday lives. OSL's Stephen Ministry training, the ongoing support of other Stephen Ministers, and God's Spirit help me carry out OSL's mission. It's very rewarding to be part of this ministry. My faith has grown, I've learned new skills, and I've found new friends.

November 10 is Stephen Ministry Sunday. You'll hear from other Stephen Ministers and their care partners about this program's impact. If you feel God's holy nudge to become a Stephen Minister or to receive support from one, contact Pr. Tim Lemme or Stephen Ministry Coordinator Deb Harlan in the Church Office, 336-2942.

## Mah-Jongg Takes a Holiday

Because of Thanksgiving, OSL's Mah-Jongg players will take the day off on Wednesday, November 27. But they'll be back in The Gathering Place the following Wednesday, at 1:00 P.M.

You are invited to join this fun and social group! All skill levels are welcome!

## Resilience

Why do some people overcome personal tragedy or illness and thrive, while others are overwhelmed by the stress of it all? Join the Spiritual Care Team and Faith Community Nursing Center at Sanford for Resilience: A Health Ministry Conference, on November 1 at the Sanford Research Center, 2301 E. 60<sup>th</sup> St. N. Explore the concept of resilience in your own life, as an individual and a caregiver. Practice and develop skills for building resilience in yourself and in those for whom you care.

Register online at [sanfordhealth.org](http://sanfordhealth.org), keyword search: Health Ministry. Questions? Contact Karla Cazer, [karla.cazer@sanfordhealth.org](mailto:karla.cazer@sanfordhealth.org) or 339-7295.

## Health Ministries

Our Savior's has a number of ongoing health ministries that meet on a weekly or monthly basis. Feel free to join any of the following sessions. For more information, contact Michelle Anderson, Faith Community Nurse, 336-2942, ext. 48, or [mianderson@oslchurch.com](mailto:mianderson@oslchurch.com).

### Footcare Clinic

Cost is \$25 per person. Wednesday, November 6, 9:00 A.M. to 3:00 P.M. Call the Church Office, 336-2942, to schedule your appointment.

### Hope for Living with Illness or Cancer

Every Tuesday at 2:00 P.M. in Caring Ministries. People and their families who have or are experiencing the challenge of cancer are welcome. If you cannot attend, but would like to be on our prayer and devotional mailing list, contact Michelle Anderson, 336-2942, ext. 48, or [mianderson@oslchurch.com](mailto:mianderson@oslchurch.com).

### Knitting/Crocheting Ministry

Learn how to knit or crochet prayer shawls (to be given to people to remind them of God's presence and love in their lives) and mittens and scarves (for missions). Wednesdays, November 13 and 27, 9:30 A.M., Sonshine Room.

### Recent Loss Group

The winter series will meet November 6 through 20 and December 4, from 5:30 to 6:30 P.M., in the Chapel. Contact Michelle Anderson, [mianderson@oslchurch.com](mailto:mianderson@oslchurch.com) or 336-2942, ext. 28, to preregister. Recent Loss attendees are welcome to partake in OSL Community Supper, available before the meeting, at 5:00 in The Gathering Place.

### Good Grief

Every Thursday at 10:00 A.M. in Room 103. This group is for anyone dealing with loss and crisis in life.

### Memory Care Support Group

Saturdays, 10:00 to 11:00 A.M., in the Conference Room. For caregivers of those with Alzheimer's and dementia, a place to share and to receive understanding and empathy. Contact Caring Ministries, 336-2942, for information.

## The Gift of Joy by Jodie Nielsen

**November Bible Study** is “No Hard Feelings?” by Anna Madsen. Session three: “Stewarding the Gift of Joy.”

Joy is defined as a feeling of great pleasure and



happiness. Anna Madsen states in this month’s Bible study that there is joy that is “like a sugar high and the crash that follows, the high of that kind of happiness is fleeting.” She goes on to counter this “fleeting joy” by stating, “Joy is a state of mind defined not by the present moment, but by the recognition that there is something beyond us that makes us more than what we think we are, a contentment that we are loved no matter what, a perspective that defines us with worth and that therefore defies those and that which makes us feel unworthy, unloved, and unlovable.” If you are interested in learning more about the Bible study in *Gather* magazine, check out a copy at the OSL Library.

It’s almost time for our **Lefse & Pie Sale!** If you have a favorite pie recipe and like to bake, then

this is a perfect way for you to support our OSL WELCA Unit. The pies can be brought to OSL on Saturday, November 16, or prior to worship services on Sunday, November 17.

Want to help make lefse? There’s an opportunity for about ten volunteers to help mix dough on Thursday, November 14, from 12:00 to 3:00 P.M.

On Saturday, November 16, volunteers to roll, grill, and package lefse would be appreciated! Everyone is welcome—no experience needed! Bring your lefse grill, turning sticks, pastry boards, pastry brush and cloths, and rolling pin, and enjoy some fun fellowship with old and new friends. Meet in the lower-level kitchen, from 7:00 A.M. to 2:00 P.M. A couple confirmation groups have signed up to help, so come and meet these young people. And who knows—there could be some lefse to sample! Contact Donna Wilson, 359-7718, or Lori Tendler, 323-8009, to sign up, or use the sign-up sheet at the Information Center.

If you are not a baker or a lefse maker, please stop by The Gathering Place on November 17, and you’ll likely find something to take home

with you! Funds from the Lefse & Pie Sale will support our Unit Wide Mission Project.

### Unit Wide Mission Project 2019—

“The Every Day Samaritan”: We are working on a creating a long-term relationship with Susan B. Anthony, a neighborhood elementary school near OSL. We are excited about this relationship and where it will lead us. Stay tuned for more updates.

**Board Position Openings:** We have two WELCA Board positions opening in January: Vice President and Treasurer. If you are interested in becoming involved in a group that contributes to our community in many different ways, please consider joining a WELCA group or becoming a board member. This is a great way to meet people and become involved in your congregation! Contact me ([jodie.nielsen@gmail.com](mailto:jodie.nielsen@gmail.com)) if you have any questions regarding these openings.

### Upcoming Events

- Lefse & Pie Sale: November 17, before, between, and after worship services, in The Gathering Place.
- WELCA Christmas Luncheon, Saturday, December 7, 11:00 A.M. to 1:00 P.M. Program by Tom Roberts.



## OSLC Foundation

### You Are Invited....

...to breakfast on Sunday, November 3, a gift to the congregation from the Our Savior’s Lutheran Church Foundation. You are most welcome to enjoy the fare presented (bacon, scrambled eggs, roasted diced potatoes, yogurt, orange juice, and donut holes), with thanks from the Foundation to Debbie and her host of volunteers who make this breakfast possible!

In case you’re wondering, here’s some information about the OSLC Foundation:

- Organized 40+ years ago
- Created to accept current and deferred gifts and build an endowment
- The Foundation board has three areas of responsibility
  - + Collect Assets: Since 1978 the balance has grown to \$2,785,434, as of 9/30/19
  - + Administer Assets: Policies and procedures are in place to assure accountability and accuracy

- + Distribute Assets: In the past eight years, \$687,000+—including \$112,000 for 2019—has been directed from the Foundation’s spending policy to support Worship and Arts, Education, Property, and Mission and Outreach

As we celebrate all that the Foundation brings to our Savior’s, you are invited to become a member of the Jubilee Society—now 125 members! Any of the Foundation’s board members will enthusiastically discuss with you the process of joining:

Gerald Beninga	Jerry Franken	Susan Hauff
Jan Haugen-Rogers	Dennis Jarabek	Cindy Nassen
Roger White	Dean Mertz	Conley Ruud

Or contact Jon Oien, [joien@sio.midco.net](mailto:joien@sio.midco.net), to begin a conversation.

*Bon appétit!*



# children

 OUR SAVIOR'S  
LUTHERAN CHURCH

## Make and Take Snack Plate Event

Thank you to all who joined in the October Pumpkin Prayers Cross+Gen event! Every table in Fellowship Hall was used as you prayed your way



through adorably unique painted pumpkin faces.

This month, all are welcome to the Make and Take Snack Plate Cross+Gen Event, on November 10, at 10:00 A.M., in Fellowship Hall. Come

## SAVE THE DATES!

### OSL Children's Milestones and Singing 2019–2020

*All Sunday School and Wednesday School students age four through grade five sing*

- November 17** at 11:00 Festive (2<sup>nd</sup> Grade Milestone)
- December 15** at 8:45 Celebrate & 11:00 Festive (Children's Christmas Program) *Rehearsal on December 14, morning*
- February 9** at 8:45 Celebrate (4<sup>th</sup> Grade Milestone)
- March 15** at 11:00 Festive (1<sup>st</sup> Grade Milestone)
- March 29** No Singing (4- and 5-Year-Old Preschool Milestone)
- April 5** at 8:45 Celebrate & 11:00 Festive (Palm Sunday Procession)
- April 9** No singing (5<sup>th</sup> Grade Milestone) *Agape Meal April 8*
- April 26** at 8:45 Celebrate (3<sup>rd</sup> Grade Milestone)

*Sunday learners will not attend Sunday School on dates they have a milestone, since you will have Family Time with Pr. Sami at 10:00 A.M. in the Friendship Room.*

decorate a plate to fill with treats and pass on to a friend. That friend can then enjoy the treats, refill the plate, and bless another—the giving never



ends! This will be in lieu of regular Sunday School and Middle School Sunday Morning education. A parent or caring adult must accompany students in grade five or younger.

Come have fun creating a gift for others!

## Second Graders' Ten Commandments Milestone and Students Sing

OSL second-graders will celebrate their Ten Commandments Milestone on November 17. Students and their parents/caring adults will have Family Time with Pr. Sami at 10:00 A.M., in the Friendship Room, which will include a Lego activity. Then families will celebrate the milestone and receive a blessing during the 11:00 Festive worship service. Family Time will be in lieu of Sunday School that day for Sunday learners.

Also, all students age four through grade five will lead the congregation in song at that 11:00 Festive service.



## Winter at OSL Youth Ministry

We have had a great year so far, with more than 40 kids each week at High School Youth Group, our first Middle School Sunday Night Youth Group events, and our first special events at the apple orchard and corn maze. November looks to be another great month, with a Youth Ministry service event, a fun middle school event, and finishing up an important series in High School Youth Group.

OSL youth will once again serve a Thanksgiving meal for the kids and families of the VOA Youth Center, from 5:00 to 7:00 P.M. on Friday, November 22. This year the event will move to OSL, which allows us to expand the event to include families from Hezekiah House and the Genesis mentor program. It is a fun time of fellowship, as well as a classic Thanksgiving meal provided by Debbie and a great group of volunteers. Youth Ministry families looking to help can contact John, [jschomberg@oslchurch.com](mailto:jschomberg@oslchurch.com), or check your Youth Happenings email.

Sunday, November 24, will be FROZEN night at Middle School Sunday Night Youth Group. Come at 5:00 P.M. for three hours of food, games, and fun as we talk about different “choices” made by characters of the movie *Frozen* and play winter-themed games in a competition for prizes and glory. There is no cost for this event, and friends are always welcome.



Finally, high school youth are encouraged to come on Wednesday nights for the conclusion of our series on mental health, taught by Takara Schomberg, a professor of nursing specializing in mental health, from South Dakota State University. This is a great opportunity to discuss real issues facing our high school youth and to understand that mental health is a critical part of our overall health.

Coming up in December and January will be Middle School Christmas Games and White Elephant Gift Exchange, High School Progressive Dinner, Middle School Lock-in, and High School Okoboji Winter Retreat. See your Youth Happenings emails for all these events and more, or visit [oslchurch.com/youth](http://oslchurch.com/youth).

### Tune in to OSL!

You'll find recent videos of worship services and special events at [oslchurch.com/media](http://oslchurch.com/media), but in addition you'll want to subscribe to OSL's YouTube channel, where videos are archived for easy access. Visit [youtube.com/oslchurchsf](http://youtube.com/oslchurchsf).



Photo by Joshua Ness on Unsplash.com



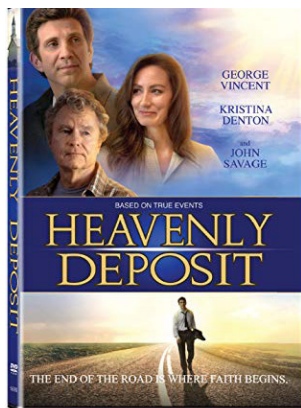
## “Whoo Loves Books” Fall Reading Program

The OSL Library’s fall reading program, “Whoo Loves Books,” continues through November 24, for children, youth, and adults.



Each day you check out items, you will receive a treat. The first time you check out books during the reading program, your name will be displayed on the bulletin board, and you will be entered into a drawing for a prize. The winner of the prize will be announced in the bulletin announcements the weekend of December 1.

## Second Saturday Movie



This month’s Second Saturday Movie, on November 9, will be *Heavenly Deposit*.

After the devastating loss of his father as a young boy, Peter Ranos denies the presence of God in his life and decides to take matters into his own hands. Years later, Peter’s life is riddled with problems, financial ruin, unemployment, and, ultimately, marital challenges.

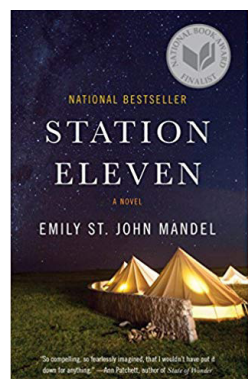
In Peter’s mind, all he needs is one big

break to make things right, but every time a break is near, something happens to set him back even further. When Peter’s world finally collapses around him, his despair awakens a divine experience and he can no longer deny the power of God. All he has to do is accept God’s love and lean on a power greater than his own... but will he?

Make a day of it with the movie at 2:30 in the Holy Word Theatre, followed by worship at 5:00 in the Sanctuary, and dinner afterward in The Gathering Place!

## Monthly Book Club for Adults

The Book Club for Adults meets at 7:00 P.M. on the fourth Thursday of each month in the OSL Library to discuss that month’s book. The November 21 selection will be *Station Eleven* by Emily St. John Mandel.



An audacious, darkly glittering novel set in the eerie days of civilization’s collapse, *Station Eleven* tells the spellbinding story of a Hollywood star, his would-be savior, and a nomadic group of actors roaming the scattered outposts of the Great Lakes region, risking everything for art and humanity.

Kirsten Raymonde will never forget the night Arthur Leander, the famous Hollywood actor, had a heart attack on stage during a production of *King Lear*. That was the night when a devastating flu pandemic arrived in the city, and within weeks, civilization as we know it came to an end.

Twenty years later, Kirsten moves between the settlements of the altered world with a small troupe of actors and musicians. They call themselves The Traveling Symphony, and they have dedicated themselves to keeping the remnants of art and humanity alive. But when they arrive in St. Deborah by the Water, they encounter a violent prophet who will threaten the tiny band’s existence. And as the story takes off, moving back and forth in time and vividly depicting life before and after the pandemic, the strange twist of fate that connects them all will be revealed.

Join this exciting community of readers! A list of 2019 selections is available in the OSL Library.

## OSL Library Online Catalog

Access the OSL Library’s online catalog, OPAC, to search for items, see a carousel of new books, read snapshots of featured books, view Library news and messages, and more. If you’ve provided your e-mail address, you may view your personal OPAC account to reserve and renew items, develop watch lists, and more. See Library staff for log-in details.

Visit OPAC by going to [oslchurch.com/library](http://oslchurch.com/library) and clicking the button, or scan the QR code at right.



## OSL Library Hours

Sunday — 8:30 A.M.–12:15 P.M.

Monday — 9:00 A.M.–noon

Tuesday — 9:00 A.M.–noon

Wednesday — 9:00 A.M.–7:30 P.M.

Thursday — 9:00 A.M.–noon

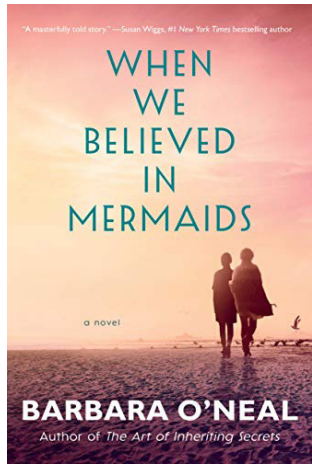
Friday — Closed

2<sup>nd</sup> Saturday of the Month — 10:00 A.M.–noon, 4:30–6:30 P.M.



## New for Adults

**When We Believed in Mermaids** by Barbara O'Neal. Her sister has



been dead for 15 years when she sees her on the TV news. Josie Bianci was killed years ago on a train during a terrorist attack. Gone forever. It's what her sister, Kit, an ER doctor in Santa Cruz, has always believed.

Yet all it takes is a few heart-wrenching seconds to upend Kit's world. Live coverage of a club fire in Auckland has captured the image of a woman stumbling through the smoke and debris. Her resemblance to Josie is unbelievable and unmistakable. With it comes a flood of

emotions—grief, loss, and anger—that Kit finally has a chance to put to rest: by finding the sister who's been living a lie.

After arriving in New Zealand, Kit begins her journey with the memories of the past—of days spent on the beach with Josie, of a lost teenage boy who'd become part of their family, and of a trauma that has haunted Kit and Josie their entire lives.

Now, if two sisters are to reunite, it can only be by unearthing long-buried secrets and facing a devastating truth that has kept them apart far too long. To regain their relationship, they may have to lose everything.

### Additional New Titles for Adults

- *The Next Person You Meet in Heaven* by Mitch Albom
- *Listening to Love* by Beth Wiseman
- *The Lacuna* by Barbara Kingsolver

## New for Middle- and High-School Youth

**White Bird** by R. J. Palacio. In Palacio's bestselling collection of stories *Auggie & Me*, which expands on characters in *Wonder*, readers were introduced to Julian's grandmother, Grandmère. Here, Palacio makes her graphic novel debut with Grandmère's heartrending story: how she, a young Jewish girl, was hidden by a family in a Nazi-occupied French village during World War II; how the boy she and her classmates once shunned became her savior and best friend.

Sara's harrowing experience moving demonstrates the power of kindness to change hearts, build bridge, and even save lives. As Grandmère tells Julian, "It always takes courage to be

kind, but in those days, such kindness could cost you everything." With poignant symbolism and gorgeous artwork that brings Sara's story out of the past and cements it firmly in this moment in history, *White Bird* is sure to captivate anyone who was moved by the book *Wonder* or the blockbuster movie adaptation and its message.

### Additional New Titles for Middle- and High-School Youth

- *Soldier Dog* by Sam Angus
- *Guts* by Raina Telgemeier
- *Jacky Ha-Ha: My Life Is a Joke* by James Patterson

## New Picture, Early Reader, and Chapter Books

**An Elephant in the Garden** by Michael Morpurgo. Lizzie and



Karl's mother is a zookeeper. The family has become attached to an orphaned elephant, Marlene, who will be destroyed as a precautionary measure so she and the other animals don't run wild should the zoo be hit by bombs.

The family persuades the zoo director to let Marlene stay in their garden instead. When the city is bombed, the family flees with thousands of others, but how can they walk the same route when they have an elephant in tow, and

keep themselves safe? Along the way, they meet Peter, a Canadian navigator who risks his own capture to save the family.

As Michael Morpurgo writes in an author's note, *An Elephant in the Garden* is inspired by historical truths and by his admiration for elephants, "the noblest and wisest and most sensitive of all creatures." This is a story that brings together an unlikely group of survivors whose faith in kindness and love proves the best weapon of all.

### Additional New Chapter Books

- *Time Jumpers: Fast-forward to the Future* by Wendy Mass
- *Diary of a Pug: Pug Blasts Off* by Kyla May

### New Early Reader Books

- *Who Is the Mystery Reader?* by Mo Williams
- *The Long Dog* by Eric Seltzer

### New Picture Books

- *The Scarecrow* by Beth Ferry
- *Don't Call Me Bear* by Aaron Blabey



909 West 33rd St.,  
Sioux Falls, SD 57105

(605) 336-2942  
[www.oslchurch.com](http://www.oslchurch.com)

INTERCOM (USPS311210)

Published monthly by:

Our Savior's Lutheran Congregation

909 West 33rd Street, Sioux Falls, SD 57105

Periodicals Postage Paid at Sioux Falls, South Dakota

POSTMASTER:

Please send address change to INTERCOM,  
909 West 33rd Street, Sioux Falls, SD 57105

# The *intercom* In Church and Community

November 2019

The Monthly Newsletter of Our Savior's Lutheran Church

## *Worship Services*

Saturday Evening – 5:00 P.M., Sanctuary

Sunday Morning

Festive Worship – 8:45 and 11:00 A.M., Sanctuary

Celebrate Worship – 8:45 and 11:00 A.M., Celebrate Center

## *Television and Internet*

Celebrate: 9:00 A.M., KTTW (cable channel 9; channel 7.1)

Festive: 1:00 P.M., KSCB (cable channel 30; channel 53)

Website: [oslchurch.com](http://oslchurch.com)

Social Media: [twitter.com/oslchurchsf](https://twitter.com/oslchurchsf) · [facebook.com/oslchurchsf](https://facebook.com/oslchurchsf) ·  
[youtube.com/oslchurchsf](https://youtube.com/oslchurchsf)

Cover banner photo by Priscilla Du Preez on Unsplash.com  
Offering plate photo via Backgrounddownload.com

## Your Offering Makes a Difference

Your generosity is making a real difference in people's lives through the mission and ministry of OSL. Thank you for your faithful and passionate commitment to God's work through this congregation. Your generosity helps Our Savior's fully fund its ministry of connecting faith to everyday life.

## Ministry Support through September 30

	Annual Giving
Projected Contributions	\$1,969,580
Received YTD	\$1,353,523
Remaining	\$616,057
Projected YTD	\$1,440,249
Ahead/(Behind)	(\$86,726)