

Festive



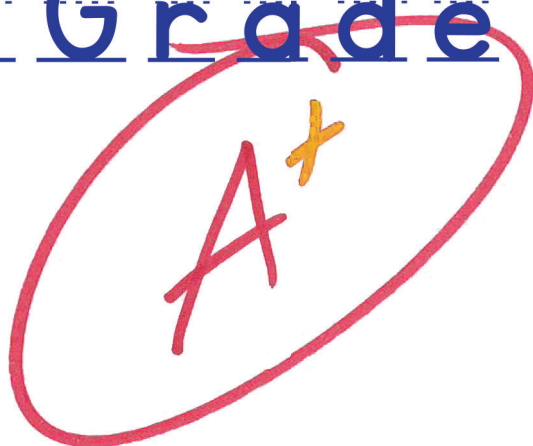
OUR SAVIOR'S
LUTHERAN CHURCH
Connecting Faith to Everyday Life.

Traditional Worship Service

EIGHTEENTH SUNDAY AFTER PENTECOST
SATURDAY, SEPTEMBER 25, 2021 ♦ 5:00 P.M.

Making

the Grade



GATHERING

Prelude

“Adagio,” Tomaso Albinoni

“Let All Things Now Living” Ennis Fruhauf

Call to Worship

+Confession and Forgiveness

+Hymn – ELW, No. 807 “Come, Thou Fount of Every Blessing”



1 Come, thou Fount of ev - 'ry bless-ing, tune my heart to sing thy grace;
2 Here I raise my Eb - en - e - zer: "Hith-er by thy help I've come";
3 Oh, to grace how great a debt - or dai - ly I'm con-strained to be;



streams of mer - cy, nev - er ceas - ing, call for songs of loud-est praise.
and I hope, by thy good plea-sure, safe - ly to ar - rive at home.
let that grace now like a fet - ter bind my wan-d'ring heart to thee.



While the hope of end-less glo - ry fills my heart with joy and love,
Je - sus sought me when a strang-er, wan-d'ring from the fold of God;
Prone to wan - der, Lord, I feel it; prone to leave the God I love.



teach me ev - er to a - dore thee; may I still thy good-ness prove.
he, to res - cue me from dan-ger, in - ter - posed his pre-cious blood.
Here's my heart, oh, take and seal it; seal it for thy courts a - bove.

Text: Robert Robinson, 1735–1790, alt.
Music: NETTLETON, J. Wyeth, *Repository of Sacred Music*, Part II, 1813

+Greeting

+Canticle of Praise – ELW, No. 886, “Oh, for a Thousand Tongues to Sing,”
sts. 1, 2, 6



1 Oh, for a thou-sand tongues to sing my great Re-deem-er's praise,
2 My gra - cious Mas - ter and my God, as - sist me to pro - claim,
3 The name of Je - sus charms our fears and bids our sor - rows cease,
4 He speaks, and lis - t'ning to his voice, new life the dead re - ceive;



the glo - ries of my God and king, the tri-umphs of his grace!
to spread through all the earth a - broad the hon - ors of your name.
sings mu - sic in the sin-ner's ears, brings life and health and peace.
the mourn - ful, bro-ken hearts re - joice, the hum - ble poor be - lieve.

5 Look unto him, your Savior own,
O fallen human race!
Look and be saved through faith alone,
be justified by grace!

6 To God all glory, praise, and love
be now and ever giv'n
by saints below and saints above,
the church in earth and heav'n.

Text: Charles Wesley, 1707–1788, alt.
Music: AZMON, Carl G. Gläser, 1784–1829; arr. Lowell Mason, 1792–1872

WORD

Prayer for Illumination

Reading – James 5:13–20

+Gospel Acclamation – ELW, page 198

+Gospel – Mark 9:38–50

Sermon

Hymn of the Day – ELW, No. 697, “Just a Closer Walk with Thee,” *sts. 1, 2*



Just a clos-er walk with thee, grant it, Je-sus, is my plea;



dai-ly walk-ing close to thee, let it be, dear Lord, let it be.



- 1 I am weak but thou art strong: Je - sus, keep me from all wrong;
- 2 Through this world of toil and snares, if I fal-ter, Lord, who cares?
- 3 When my fee-ble life is o'er, time for me will be no more;



I'll be sat-is-fied as long as I walk, let me walk close to thee.
Who with me my bur-den shares? None but thee, dear Lord, none but thee.
guide me gent-ly, safe-ly o'er to thy king - dom shore, to thy shore.

Text: North American traditional
Music: CLOSER WALK, North American traditional

+Apostles' Creed

+Prayers of Intercession

MEAL

Offering

Invitation to the Offering

Offering Song – “Lord, Listen to Your Children Praying,” Ken Medema

Prayer after Holy Communion

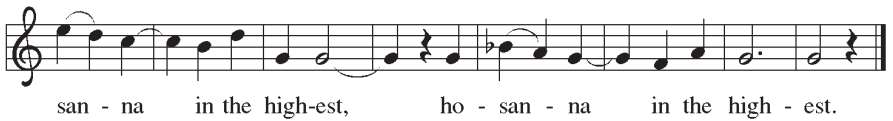
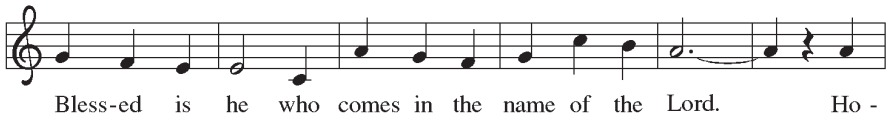
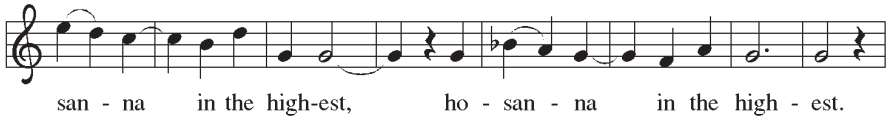
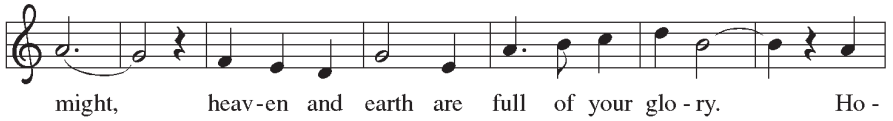
+Great Thanksgiving

Dialog



Eucharistic Prayer

Holy



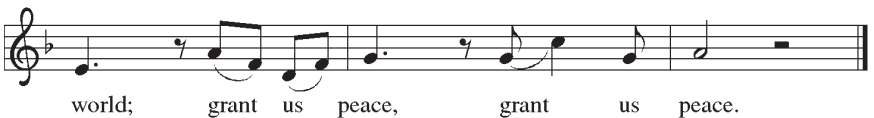
Words of Institution

Lord's Prayer

Invitation to the Meal

Holy Communion

Lamb of God



Communion Hymn – ELW, No. 515, “Break Now the Bread of Life”



- 1 Break now the bread of life, dear Lord, to me, as once you
- 2 Bless your own word of truth, dear Lord, to me, as when you
- 3 You are the bread of life, dear Lord, to me, your ho - ly



broke the loaves be - side the sea. Be - yond the sa - cred page
blessed the bread by Gal - i - lee. Then shall all bond-age cease,
word the truth that res - cues me. Give me to eat and live



I seek you, Lord; my spir - it waits for you, O liv - ing Word.
all fet - ters fall; and I shall find my peace, my All - in - All!
with you a - bove; teach me to love your truth, for you are love.

Text: Mary A. Lathbury, 1841–1913, alt.
Music: BREAD OF LIFE, William F. Sherwin, 1826–1888

Prayer after Communion

SENDING

Sending Hymn – ELW, No. 836, “Joyful, Joyful We Adore Thee,” *sts. 1, 3*



- 1 Joy - ful, joy - ful we a - dore thee, God of glo - ry, Lord of love!
- 2 All thy works with joy sur - round thee, earth and heav'n re - flect thy rays,
- 3 Thou art giv - ing and for - giv - ing, ev - er bless - ing, ev - er blest,



Hearts un - fold like flow'rs be - fore thee, prais - ing thee, their sun a - bove.
stars and an - gels sing a - round thee, cen - ter of un - bro - ken praise.
well - spring of the joy of liv - ing, o - cean - depth of hap - py rest!



Melt the clouds of sin and sad - ness, drive the gloom of doubt a - way.
Field and for - est, vale and moun - tain, flow - 'ry mead - ow, flash - ing sea,
Thou our Fa - ther, Christ our broth - er, all who live in love are thine;



Giv - er of im - mor - tal glad - ness, fill us with the light of day.
chant - ing bird, and flow - ing foun - tain call us to re - joice in thee.
teach us how to love each oth - er, lift us to the joy di - vine!

Text: Henry van Dyke, 1852–1922
Music: HYMN TO JOY, Ludwig van Beethoven, 1770–1827, adapt.

Announcements

Sending

Postlude – “Psalm 19: The Heavens Declare,” Benedetto Marcello

Connecting Faith to Everyday Life.

Mission: Our Savior's is a people forgiven in Christ whose mission is to proclaim Christ and nurture faith that connects with everyday life. Our beliefs and mission shape our values and our values shape how we live. OSL has five Core Values: Worship, Service, Learning, Generosity, and Community. Learn more at oslchurch.com.

Annual Vision for Ministry: By God's grace and with deep gratitude, we will nurture community and boldly embrace and serve all.

Guests: Thank you for worshipping at OSL today. If you're searching for a church home, you are welcome to contact the Church Office—336-2942 or raaker@oslchurch.com—visit oslchurch.com, or come by during regular business hours.

Worship services are broadcast on Sundays (Celebrate: 9:00 A.M. on KTTW, cable channel 9; channel 7.1; Festive: 1:00 P.M. on KSCB, cable channel 30; channel 53), streamed on Facebook Live (facebook.com/oslchurchsf; Celebrate is at 8:45 a.m., Festive at 10:15), and are available on Monday at oslchurch.com.

Assistive listening devices are available at the sound booth in the Sanctuary and Celebrate Center.

The Church Office is open from 8:00 A.M. to 5:00 P.M., Monday through Friday. Call 336-2942 or email raaker@oslchurch.com.

WORSHIP LEADERS

Presiding and Preaching Minister: Pastor Tim Lemme

Piano: Kyle Quanbeck

Cantor: Maribeth Anderson

Reader: Maribeth Anderson

Media: Josh Matzner

Sound: Bob Nelson

Telecasts are sponsored in part by Delaine Shay, in memory of Owen Shay and in honor of Delaine and Owen's wedding anniversary.



OUR SAVIOR'S
LUTHERAN CHURCH

Connecting Faith to Everyday Life.

www.oslchurch.com